

**MALAYSIA**

CIVIL AVIATION AUTHORITY OF MALAYSIA  
AERONAUTICAL INFORMATION SERVICES  
AIR TRAFFIC CONTROL TOWER (TOWER WEST)  
JALAN KLIA 2/4,  
64000 KLIA,  
SELANGOR DARUL EHSAN  
MALAYSIA.

PHONE: 6-03-8778 4106  
Email ais@caam.gov.my  
URL: aip.caam.gov.my

**AIRAC AIP SUP  
32/25**  
Effective Date: 10 JUL 2025  
to 30 JUN 2026  
Publication Date: 05 JUN 2025

**KOTA BHARU / SULTAN ISMAIL PETRA AIRPORT (WMKC)  
UPGRADING WORKS**

**1 INTRODUCTION**

- 1.1 The following temporary changes concerning Kota Bharu Aerodrome (WMKC) is taking place due to upgrading works from 30th April 2024 until 30th June 2026 EST. Upgrading works will be divided into 2 Phases. Phase 2A will take place from 30th April 2024 until 29th May 2025 EST. Phase 2B will take place from 30th April 2024 until 30th June 2026 EST.
- 1.2 During Phase 2, new Bay 6, Bay 7, Bay 8, Bay 9, Bay 10 and Bay 11/Bay 11A have been activated as permanent aircraft stands. Bay 1, Bay 2, Bay 3, Bay 4 and Bay 5 are closed for upgrading works.
- 1.3 For Phase 2A, new Taxiway A and Taxiway C have been activated as permanent taxiways.
- 1.4 During Phase 2B, Taxiway B, Taxiway B1, Taxiway E (between Taxiway B to Taxiway C) and Taxiway E (between Taxiway A to Taxiway L) closed for upgrading works. Details of the taxiway closure will be mentioned in the remarks.
- 1.4.1 WMKC AD 2.8 APRONS, TAXIWAYS AND CHECK LOCATION/POSITIONS DATA

1	Apron surface and strength	BAY 6, BAY 7, BAY 8, BAY 9, BAY 10, BAY 11 and BAY 11A Surface: Concrete (Rigid) Strength: PCR 660 / R / B / W / T
2	Taxiway width, surface and strength	TWY A Width: 25 M Surface: Asphalt (Flexible) Strength: PCR 651 / F / D / X / U
		TWY A1 Width: 18 M Surface: Asphalt (Flexible) Strength: PCR 651 / F / D / X / U
		TWY B Width: 26 M Surface: Asphalt (Flexible) Strength: PCR 651 / F / D / X / U
		TWY C Width: 18 M Surface: Asphalt (Flexible) Strength: PCR 527 / F / B / X / T
		TWY D Width: 17 M Surface: Asphalt (Flexible) Strength: PCR 651 / F / D / X / U

		<p>TWY E Width: 18 M Surface: Asphalt (Flexible) Strength: PCR 651 / F / D / X / U</p>
		<p>TWY E (EXT.) Width: 18 M Surface: Asphalt (Flexible) Strength: PCR 650 / F / B / X / T</p>
		<p>TWY F Width: 14 M Surface: Asphalt (Flexible) Strength: 8.3Tonnes</p>
		<p>TWY G Width: 21 M Surface: Asphalt (Flexible) Strength: PCR 507 / F / D / X / U</p>
		<p>TWY H Width: 13 M Surface: Asphalt (Flexible) Strength: 8.3 Tonnes</p>
		<p>TWY L &amp; L1 Width: 18 M Surface: Asphalt (Flexible) Strength: PCR 650 / F / B / X / T</p>
		<p>APRON TAXIWAY J Width: 18 M Surface: Concrete (Rigid) Strength: PCR 660 / R / B / W / T</p>
5	Remarks	<p><b>PHASE 2A</b></p> <ul style="list-style-type: none"> <li>i. New apron BAY 6,7,8, 9, 10, 11/11A FM 20240430 TIL PERM.</li> <li>ii. TWY A &amp; A1 FM 20250530 TIL PERM.</li> <li>iii. TWY C FM 20250530 TIL PERM.</li> </ul> <p><b>PHASE 2B</b></p> <ul style="list-style-type: none"> <li>i. Apron bay 1, 2, 3, 4, 5 U/S FM 20240430 TIL 20260630 EST.</li> <li>ii. TWY B &amp; B1 U/S FM 20250530 TIL 20260630 EST.</li> <li>iii. TWY E (FM TWY B TO TWY C) U/S FM 20250530 TIL 20260630 EST.</li> <li>iv. TWY E (FM TWY A TO TWY L) U/S FM 20250530 TIL 20260630 EST.</li> </ul>

1.4.2 WMKC AD 2.9 SURFACE MOVEMENT GUIDANCE AND CONTROL SYSTEM AND MARKINGS

4	Remarks	<p>TWY Centre Line LGT TWY C U/S FM 20250530 TIL 20250901 EST New visual docking and guidance system for Bay 6, 7 &amp; 8 FM 20240430 TIL PERM</p>
---	---------	--

## 1.4.3 WMKC AD 2.10 AERODOME OBSTACLES (ADDITIONAL)

<i>In Area 3</i>					
<i>OBST ID/ Designation</i>	<i>OBST type</i>	<i>OBST position</i>	<i>ELEV/HGT</i>	<i>Markings/ Type, colour</i>	<i>Remarks</i>
a	b	c	d	e	f
TC-4	Tower crane	061011.4N 1021732.6E	5 m / 45 m	Marked / LIM R	Crane jib reach 66 m  Obstacle in position FM 20240116 TIL 20250824 EST
TC-5	Tower crane	061012.1N 1021736.6E	5 m / 38 m	Marked / LIL R	Crane jib reach 65 m  Obstacle in position FM 20240116 TIL 20250824 EST
TC-6	Tower crane	061010.5N 1021734.6E	5 m / 36 m	Marked / LIL R	Crane jib reach 56 m  Obstacle in position FM 20240116 TIL 20250824 EST
TC-7	Tower crane	061008.2N 1021739.7E	5 m / 36 m	Marked / LIL R	Crane jib reach 50 m  Obstacle in position FM 20240116 TIL 20250824 EST

## 1.4.4 WMKC AD 2.15 OTHER LIGHTING, SECONDARY POWER SUPPLY

3	TWY edge and centre line lighting	<p><b>PHASE 2A</b></p> <p>i. TWY A edge &amp; CL LGT U/S FM 20240430 TIL 20250529 EST.</p> <p>ii. TWY C edge &amp; CL U/S FM 2 FM 20240430 TIL 20250402 EST.</p> <p><b>PHASE 2B</b></p> <p>i. TWY B edge &amp; CL LGT U/S FM 20250402 TIL 20250824 EST.</p> <p>ii. TWY E (FM TWY B TO TWY C) U/S FM 20250402 TIL 20250824 EST.</p>
---	-----------------------------------	--

## 1.4.5 WMKC AD 2.20 LOCAL TRAFIC REGULATIONS (ADDITIONAL)

Taxiing to and from stands:

- a) No aircraft movement is allowed at closed portions of apron taxiway, aircraft stand taxi lane, parking bays and taxiways.
- b) The routes to be used by aircraft when taxiing into, on and out of the apron will be specified by ATC. The issuance of a taxi route by ATC does not relieve the pilot-in-command of the responsibility to maintain separation with other aircraft in the movement area or to comply with ATC directions intended to regulate aircraft movement.
- c) Pilots are advised to take note of the precautions on the presence of open excavation, workers, construction materials and construction equipment, particularly when taxiing adjacent to the apron and aircraft bays/stand while works within the cordoned/barricaded areas are in progress.

d) During Phase 2, new Bay 6 and Bay 7 shall operate for A20N/A21N, B38M/ B738/ B739/E290 aircraft. New Bay 8 shall operate for A20N/A21N, B38M/ B738/ B739. New Bay 9 shall operate for A20N/A21N, B38M/B738/B739, AT75/AT76 and E290 aircraft. New Bay 10 and Bay 11 shall operate for AT75/AT76 aircraft. All bays shall be Power-In Push-Back operation. Bay 11A shall operate for B738/B739 and Power-In Power-Out operation.

1.5 Refer appendices for additional information:

- a) **APPENDIX A: Aerodrome/Heliport Chart-ICAO (Phase 2A)**
- b) **APPENDIX B: Aircraft Parking/Docking Chart-ICAO (Phase 2A)**
- c) **APPENDIX C: Aerodrome Ground Movement Chart-ICAO (Phase 2A)**
- d) **APPENDIX D: Aerodrome/Heliport Chart-ICAO (Phase 2B)**
- e) **APPENDIX E: Aircraft Parking/Docking Chart-ICAO (Phase 2B)**
- f) **APPENDIX F: Aerodrome Ground Movement Chart-ICAO (Phase 2B)**

## 2 CONTACT

2.1 Any information and queries to contact:

Name: Mr. Mohammad Faris Norazman

Designated: Head of Operation, MASB Kota Bharu

Email: farisnorazman@malaysiaairports.com.my

## 3 VALIDITY

3.1 This AIRAC AIP Supplement will remain in force until **30<sup>th</sup> June 2026 EST**. Any updates, changes and cancellation to this AIRAC AIP Supplement will be notified through NOTAM.

- END -

**APPENDIX A  
AERODROME/HELIPORT  
CHART - ICAO  
PHASE 2A ( FM 20240430 TIL 20250529 EST )**

06° 10' 04" N  
102° 17' 27" E  
ELEV 5 M

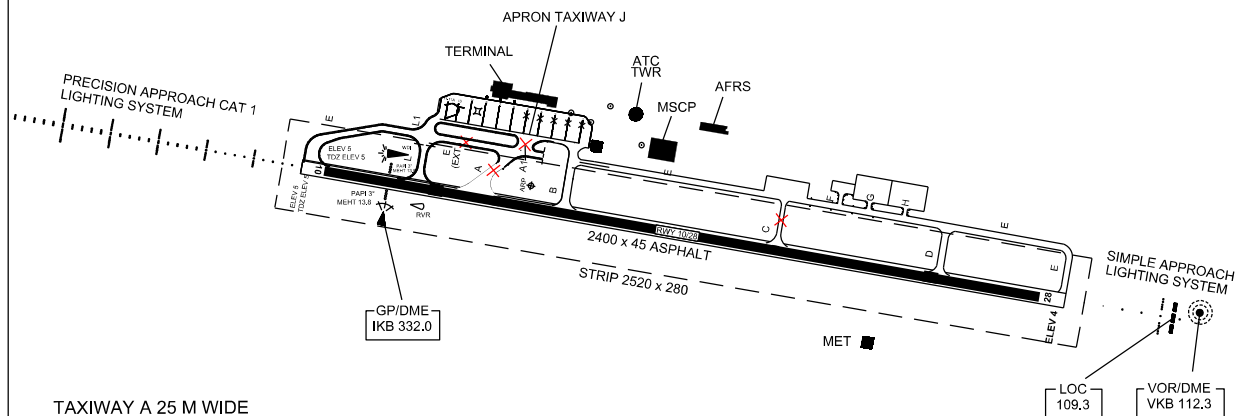
TWR	122.5
SMC	121.6
ATIS	120.85 (P)
	130.3 (S)
ATIS	128.85

**KOTA BHARU/SULTAN  
ISMAL PETRA AIRPORT**

RWY	DIRECTION	THR	BEARING STRENGTH
10	099° T	06° 10' 05.71" N 102° 17' 05.52" E	PCR 651 / F / D / X / U
28	279° T	06° 09' 52.61" N 102° 18' 22.48" E	ASPHALT



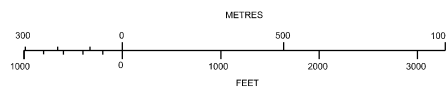
ANNUAL RATE OF CHANGE 1' 48" W  
ELEVATIONS AND DIMENSIONS METRES  
BEARINGS ARE MAGNETIC



- TAXIWAY A 25 M WIDE
- TAXIWAY A1 18 M WIDE
- TAXIWAY B 26 M WIDE
- TAXIWAY C 18 M WIDE
- TAXIWAY D 17 M WIDE
- TAXIWAY E 18 M WIDE
- TAXIWAY E (EXT) 18 M WIDE
- TAXIWAY F 14 M WIDE
- TAXIWAY G 21 M WIDE
- TAXIWAY H 13 M WIDE
- TAXIWAY L & L1 18 M WIDE
- APRON TAXIWAY J 18 M WIDE

TAXIWAY EDGE LIGHTS ON B, D, E, E (EXT), J, L AND L1  
TAXIWAY CENTRE LINE LIGHTS ON B, D, E, E (EXT) AND L AT CURVES AND EXIT TAXIWAY  
APRON TAXIWAY J FOR CODE C AIRCRAFT

- BEARING STRENGTH TAXIWAYS A, A1, B, D AND E PCR 651 / F / D / X / U
- BEARING STRENGTH TAXIWAY C PCR 527 / F / B / X / T
- BEARING STRENGTH TAXIWAY G PCR 507 / F / D / X / U
- BEARING STRENGTH TAXIWAYS F & H 8.3 TONNES
- BEARING STRENGTH TAXIWAYS L, L1 AND E (EXT) PCR 650 / F / B / X / T
- BEARING STRENGTH APRON TAXIWAY J PCR 660 / R / B / W / T



LEGEND	
CONCRETE STRUCTURE	▣
INTERMEDIATE HOLDING POSITION	---
CLOSED MARKING	✗

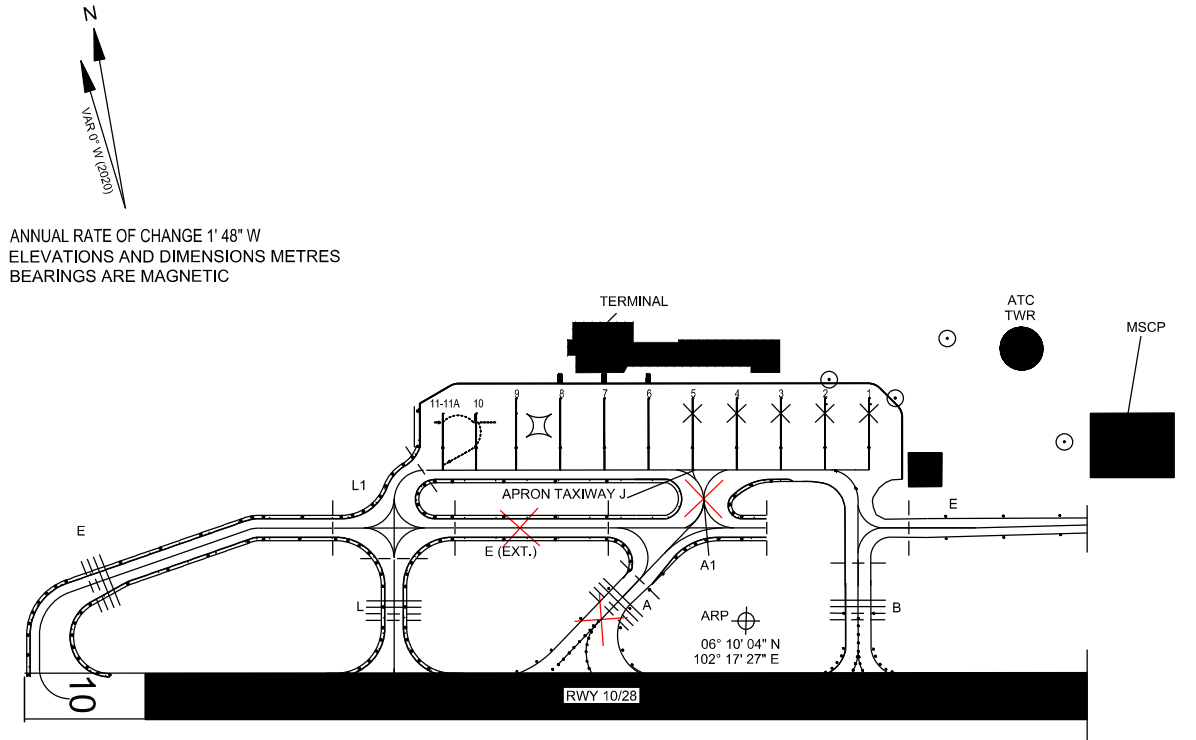
**CHANGES :** ADD INFO AT APRON ( BAY 1 TO BAY 11-11A ).  
ADD INFO ON NEW TAXIWAY E (EXT), APRON TAXIWAY J, TAXIWAY L & TAXIWAY L1  
CLOSED OPERATION FOR TAXIWAYS A, A1, C AND E ( EXT. )

**APPENDIX B  
AIRCRAFT PARKING  
DOCKING CHART - ICAO  
PHASE 2A ( FM 20240430 TIL 20250529 EST )**

APRON ELEV  
5 M

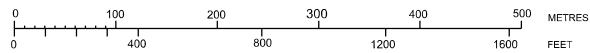
TWR	122.5
SMC	121.6
ATIS	120.85 (P)
	130.3 (S)
ATIS	128.85

**KOTA BHARU/SULTAN  
ISMAL PETRA AIRPORT**



- TAXIWAY A 25 M WIDE
- TAXIWAY A1 18 M WIDE
- TAXIWAY B 26 M WIDE
- TAXIWAY C 18 M WIDE
- TAXIWAY D 17 M WIDE
- TAXIWAY E 18 M WIDE
- TAXIWAY E (EXT) 18 M WIDE
- TAXIWAY F 14 M WIDE
- TAXIWAY G 21 M WIDE
- TAXIWAY H 13 M WIDE
- TAXIWAY L & L1 18 M WIDE
- APRON TAXIWAY J 18 M WIDE

- BEARING STRENGTH TAXIWAYS A, A1, B, D AND E PCR 651 / F / D / X / U
- BEARING STRENGTH TAXIWAY C PCR 527 / F / B / X / T
- BEARING STRENGTH TAXIWAY G PCR 507 / F / D / X / U
- BEARING STRENGTH TAXIWAYS F & H 8.3 TONNES
- BEARING STRENGTH TAXIWAYS L, L1, E (EXT) PCR 650 / F / B / X / T
- BEARING STRENGTH APRON TAXIWAY J PCR 660 / R / B / W / T
- TAXIWAY EDGE LIGHTS ON B, D, E, E (EXT), J, L AND L1
- TAXIWAY CENTRE LINE LIGHTS ON B, D, E, E (EXT) AND L AT CURVES AND EXIT TAXIWAY APRON TAXIWAY J FOR CODE C AIRCRAFT



**AIRCRAFT PARKING/DOCKING STAND POSITION**

INS COORDINATES FOR AIRCRAFT STANDS	SURFACE & STRENGTH	AIRCRAFT TYPE
6 6°10'11.79"N 102°17'26.76"E	PCR 660 / R / B / W / T	A20N/A21N , B38M/B738/B739, E290
7 6°10'12.03"N 102°17'25.36"E	PCR 660 / R / B / W / T	A20N/A21N , B38M/B738/B739, E290
8 6°10'12.27"N 102°17'23.97"E	PCR 660 / R / B / W / T	A20N/A21N , B38M/B738/B739
9 6°10'12.50"N 102°17'22.57"E	PCR 660 / R / B / W / T	A20N/A21N , B38M/B738/B739 , AT75/AT76, E290
10 6°10'12.25"N 102°17'21.23"E	PCR 660 / R / B / W / T	AT75/AT76
11 6°10'12.43"N 102°17'20.17"E	PCR 660 / R / B / W / T	AT75/AT76
11A 6°10'11.95"N 102°17'21.09"E	PCR 660 / R / B / W / T	B738/B739

LEGEND	
CONCRETE STRUCTURE	▭
AIRCRAFT STAND	5
TAXIWAY LIGHT	●
RUNWAY-HOLDING POSITION	▬▬▬▬
INTERMEDIATE HOLDING POSITION	----
CLOSED MARKING	✕
AERODROME OBSTACLE (TOWER CRANE)	⊙

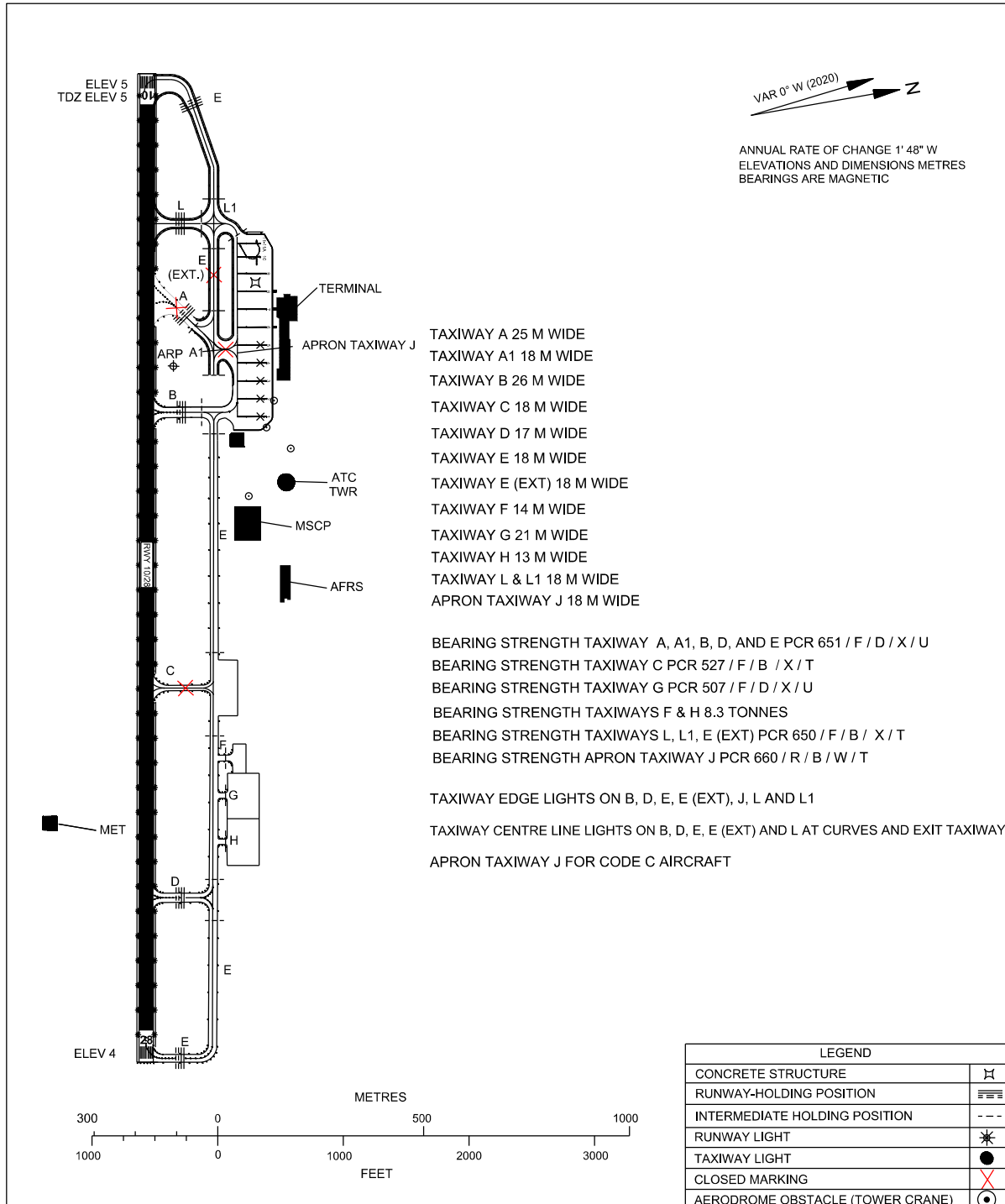
**CHANGES:** ADD INFO AT APRON ( BAY 1 TO BAY 11-11A ),  
ADD INFO ON NEW TAXIWAY E (EXT), APRON TAXIWAY J, TAXIWAY L & TAXIWAY L1  
CLOSED OPERATION FOR TAXIWAY A, TAXIWAY A1 & TAXIWAY E ( EXT. )  
ADD INTERMEDIATE HOLDING POSITION MARKING AT TAXIWAY E ( EXT. ), TAXIWAY L, TAXIWAY L1, TAXIWAY A AND TAXIWAY B  
ADD RUNWAY HOLDING POSITION MARKING AT TAXIWAY E (EXT.) AND TAXIWAY L

**APPENDIX C  
AERODROME GROUND  
MOVEMENT CHART - ICAO  
PHASE 2A ( FM 20240430 TIL 20250529EST )**

APRON ELEV  
5 M

TWR	122.5
SMC	121.6
ATIS	120.85 (P)
	130.3 (S)
ATIS	128.85

**KOTA BHARU/SULTAN  
ISMAL PETRA AIRPORT**



- TAXIWAY A 25 M WIDE
- TAXIWAY A1 18 M WIDE
- TAXIWAY B 26 M WIDE
- TAXIWAY C 18 M WIDE
- TAXIWAY D 17 M WIDE
- TAXIWAY E 18 M WIDE
- TAXIWAY E (EXT) 18 M WIDE
- TAXIWAY F 14 M WIDE
- TAXIWAY G 21 M WIDE
- TAXIWAY H 13 M WIDE
- TAXIWAY L & L1 18 M WIDE
- APRON TAXIWAY J 18 M WIDE

- BEARING STRENGTH TAXIWAY A, A1, B, D, AND E PCR 651 / F / D / X / U
- BEARING STRENGTH TAXIWAY C PCR 527 / F / B / X / T
- BEARING STRENGTH TAXIWAY G PCR 507 / F / D / X / U
- BEARING STRENGTH TAXIWAYS F & H 8.3 TONNES
- BEARING STRENGTH TAXIWAYS L, L1, E (EXT) PCR 650 / F / B / X / T
- BEARING STRENGTH APRON TAXIWAY J PCR 660 / R / B / W / T

- TAXIWAY EDGE LIGHTS ON B, D, E, E (EXT), J, L AND L1
- TAXIWAY CENTRE LINE LIGHTS ON B, D, E, E (EXT) AND L AT CURVES AND EXIT TAXIWAY J FOR CODE C AIRCRAFT

**CHANGES :** ADD INFO AT APRON ( BAY 1 TO BAY 11-11A ).  
 ADD INFO ON NEW TAXIWAY E (EXT), APRON TAXIWAY J, TAXIWAY L & TAXIWAY L1  
 CLOSED OPERATION FOR TAXIWAY A, TAXIWAY A1, TAXIWAY C & TAXIWAY E ( EXT. )  
 ADD INTERMEDIATE HOLDING POSITION MARKING AT TAXIWAY E ( EXT. ), TAXIWAY L, TAXIWAY L1, TAXIWAY A AND TAXIWAY B  
 ADD RUNWAY HOLDING POSITION MARKING AT TAXIWAY E (EXT.) AND TAXIWAY L

**APPENDIX D  
AERODROME/HELIPORT  
CHART - ICAO  
PHASE 2B ( FM 20240430 TIL 20260630 EST )**

06° 10' 04" N  
102° 17' 27" E

ELEV 5 M

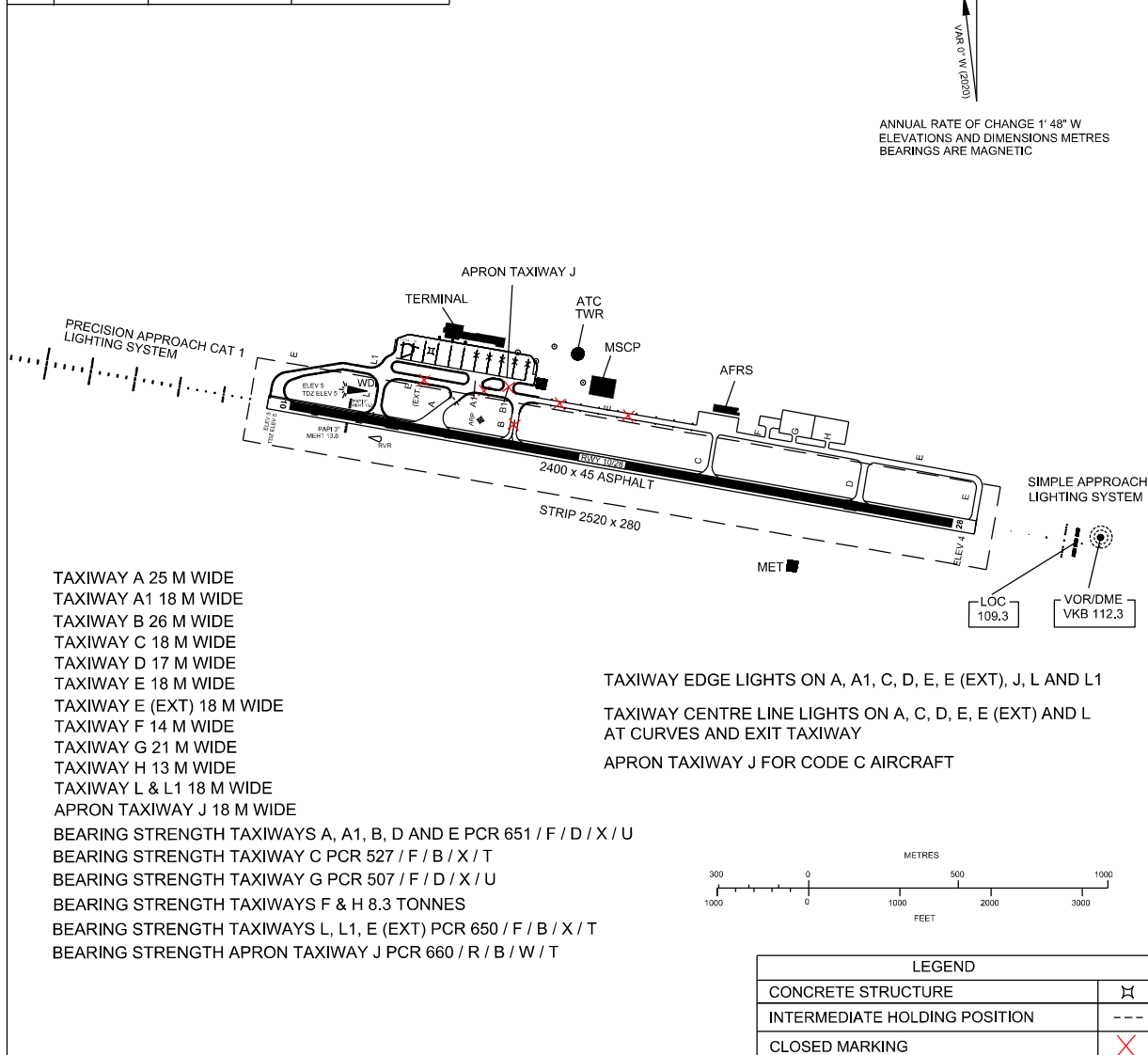
TWR	122.5
SMC	121.6
ATIS	120.85 (P)
	130.3 (S)
ATIS	128.85

**KOTA BHARU/SULTAN  
ISMAL PETRA AIRPORT**

RWY	DIRECTION	THR	BEARING STRENGTH
10	099° T	06° 10' 05.71" N 102° 17' 05.52" E	PCR 651 / F / D / X / U
28	279° T	06° 09' 52.61" N 102° 18' 22.48" E	ASPHALT



ANNUAL RATE OF CHANGE 1' 48" W  
ELEVATIONS AND DIMENSIONS METRES  
BEARINGS ARE MAGNETIC



**CHANGES :** ADD INFO AT APRON ( BAY 1 TO BAY 11-11A ),  
 ADD INFO ON NEW TAXIWAY E (EXT), APRON TAXIWAY J, TAXIWAY L & TAXIWAY L1  
 CLOSED OPERATION FOR TAXIWAY E ( EXT. )  
 ADD INTERMEDIATE HOLDING POSITION MARKING AT TAXIWAY E ( EXT. ), TAXIWAY L, TAXIWAY L1, TAXIWAY A AND TAXIWAY B  
 ADD RUNWAY HOLDING POSITION MARKING AT TAXIWAY E (EXT.) AND TAXIWAY L

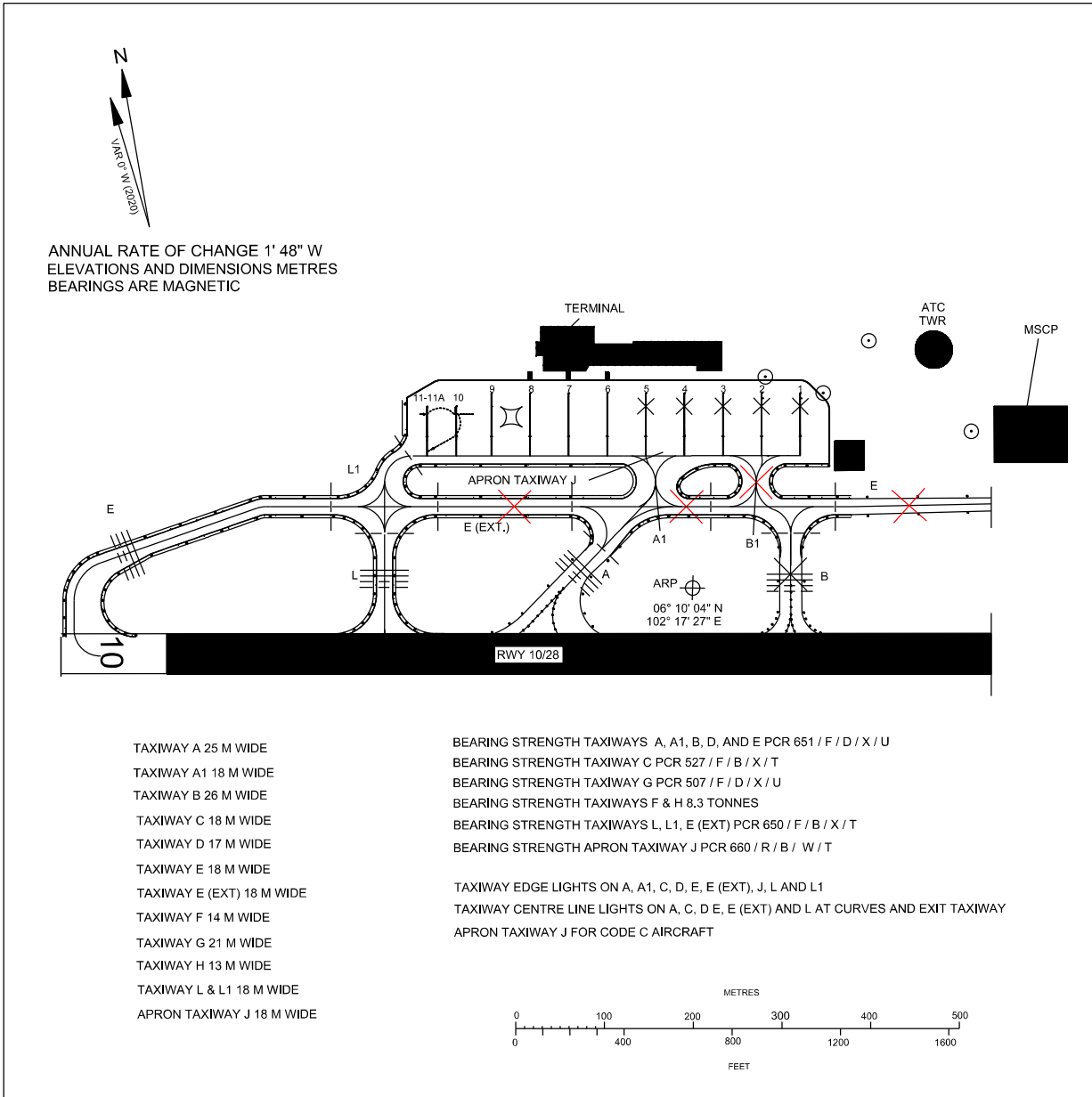


**APPENDIX E  
AIRCRAFT PARKING  
DOCKING CHART - ICAO  
PHASE 2B ( FM 20240430 TIL 20260630 EST )**

APRON ELEV  
5 M

TWR	122.5
SMC	121.6
ATIS	120.85 (P)
	130.3 (S)
ATIS	128.85

**KOTA BHARU/SULTAN  
ISMAL PETRA AIRPORT**



- TAXIWAY A 25 M WIDE
- TAXIWAY A1 18 M WIDE
- TAXIWAY B 26 M WIDE
- TAXIWAY C 18 M WIDE
- TAXIWAY D 17 M WIDE
- TAXIWAY E 18 M WIDE
- TAXIWAY E (EXT) 18 M WIDE
- TAXIWAY F 14 M WIDE
- TAXIWAY G 21 M WIDE
- TAXIWAY H 13 M WIDE
- TAXIWAY L & L1 18 M WIDE
- APRON TAXIWAY J 18 M WIDE

- BEARING STRENGTH TAXIWAYS A, A1, B, D, AND E PCR 651 / F / D / X / U
- BEARING STRENGTH TAXIWAY C PCR 527 / F / B / X / T
- BEARING STRENGTH TAXIWAY G PCR 507 / F / D / X / U
- BEARING STRENGTH TAXIWAYS F & H 8.3 TONNES
- BEARING STRENGTH TAXIWAYS L, L1, E (EXT) PCR 650 / F / B / X / T
- BEARING STRENGTH APRON TAXIWAY J PCR 660 / R / B / W / T

- TAXIWAY EDGE LIGHTS ON A, A1, B, D, E, E (EXT), J, L AND L1
- TAXIWAY CENTRE LINE LIGHTS ON A, C, D, E, E (EXT) AND L AT CURVES AND EXIT TAXIWAY
- APRON TAXIWAY J FOR CODE C AIRCRAFT

**AIRCRAFT PARKING/DOCKING STAND POSITION**

INS COORDINATES FOR AIRCRAFT STANDS	SURFACE & STRENGTH	AIRCRAFT TYPE
6 6°10'11.79"N 102°17'26.76"E	PCR 660 / R / B / W / T	A20N/A21N , B38M/B738/B739, E290
7 6°10'12.03"N 102°17'25.36"E	PCR 660 / R / B / W / T	A20N/A21N , B38M/B738/B739, E290
8 6°10'12.27"N 102°17'23.97"E	PCR 660 / R / B / W / T	A20N/A21N , B38M/B738/B739
9 6°10'12.50"N 102°17'22.57"E	PCR 660 / R / B / W / T	A20N/A21N , B36M/B738/B739 , AT75/AT76, E290
10 6°10'12.25"N 102°17'21.23"E	PCR 660 / R / B / W / T	AT75/AT76
11 6°10'12.43"N 102°17'20.17"E	PCR 660 / R / B / W / T	AT75/AT76
11A 6°10'11.95"N 102°17'21.09"E	PCR 660 / R / B / W / T	B738/B739

LEGEND	
CONCRETE STRUCTURE	⊞
AIRCRAFT STAND	5
TAXIWAY LIGHT	●
RUNWAY-HOLDING POSITION	≡≡≡≡
INTERMEDIATE HOLDING POSITION	----
CLOSED MARKING	✕
AERODROME OBSTACLE (TOWER CRANE)	⊙

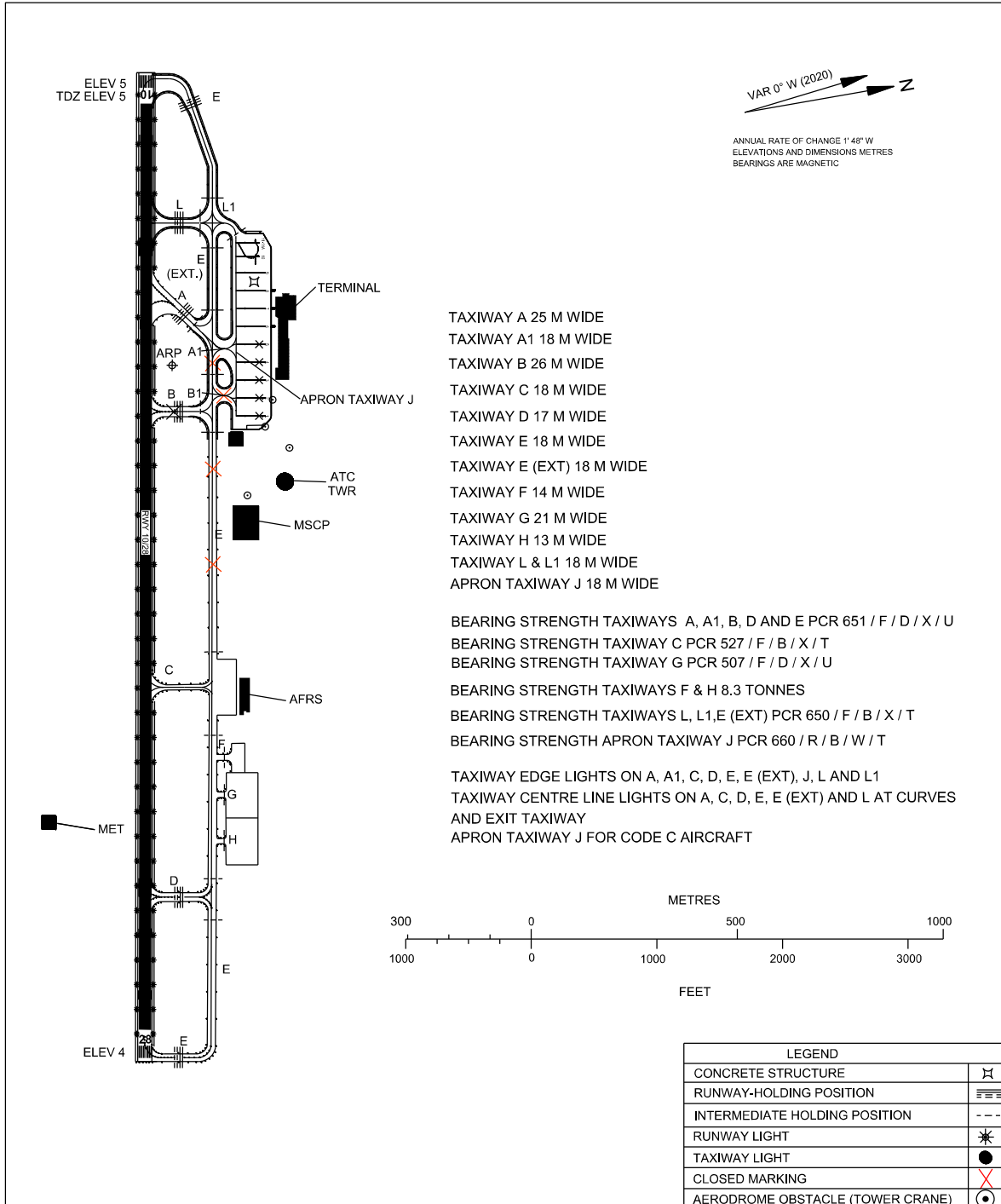
**CHANGES :** ADD INFO AT APRON ( BAY 1 TO BAY 11-11A ),  
 ADD INFO ON NEW TAXIWAY E (EXT), APRON TAXIWAY J, TAXIWAY L & TAXIWAY L1  
 CLOSED OPERATION FOR TAXIWAYS B, B1, E AND E ( EXT. )  
 ADD INTERMEDIATE HOLDING POSITION MARKING AT TAXIWAY E ( EXT. ), TAXIWAY L, TAXIWAY L1, TAXIWAY A AND TAXIWAY B  
 ADD RUNWAY HOLDING POSITION MARKING AT TAXIWAY E (EXT.) AND TAXIWAY L

**APPENDIX F  
AERODROME GROUND  
MOVEMENT CHART - ICAO  
PHASE 2B ( FM 20240430 TIL 20260630 EST )**

APRON ELEV  
5 M

TWR	122.5
SMC	121.6
ATIS	120.85 (P)
	130.3 (S)
ATIS	128.85

**KOTA BHARU/SULTAN  
ISMAIL PETRA AIRPORT**



**CHANGES :** ADD INFO AT APRON ( BAY 1 TO BAY 11-11A ),  
 ADD INFO ON NEW TAXIWAY E (EXT), APRON TAXIWAY J, TAXIWAY L & TAXIWAY L1  
 CLOSED OPERATION FOR TAXIWAYS B, B1, E AND E ( EXT. )  
 ADD INTERMEDIATE HOLDING POSITION MARKING AT TAXIWAY E ( EXT. ), TAXIWAY L, TAXIWAY L1, TAXIWAY A AND TAXIWAY B  
 ADD RUNWAY HOLDING POSITION MARKING AT TAXIWAY E (EXT.) AND TAXIWAY L